



ATLANTIC

Administration of Ticagrelor in the cath Lab or in the Ambulance for New ST elevation myocardial Infarction to open the Coronary artery

G. Montalescot, for the ATLANTIC investigators

Dr. Montalescot reports receiving consulting fees from AstraZeneca, Bayer, Biotronik, Boehringer Ingelheim, Bristol-Myers Squibb, Cardiovascular Research Foundation, Daiichi-Sankyo, Eli Lilly, Europa Organisation, the Gerson Lehrman Group, Iroko Cardio International, Lead-Up, Luminex, McKinsey & Company Inc., Remedica, Servier, TIMI Study Group, WebMD, Wolters Kluwer Health, Medicines Company, Medtronic, Menarini Group, Pfizer, Roche, Sanofi-Aventis, and grant support from Abbott Laboratories, Accumetrics, AstraZeneca, Biotronik, Bristol-Myers Squibb, Daiichi-Sankyo, Eli Lilly, Medicines Company, Medtronic, Menarini Group, Nanosphere Inc., Pfizer, Roche, Sanofi-Aventis and Stentys.



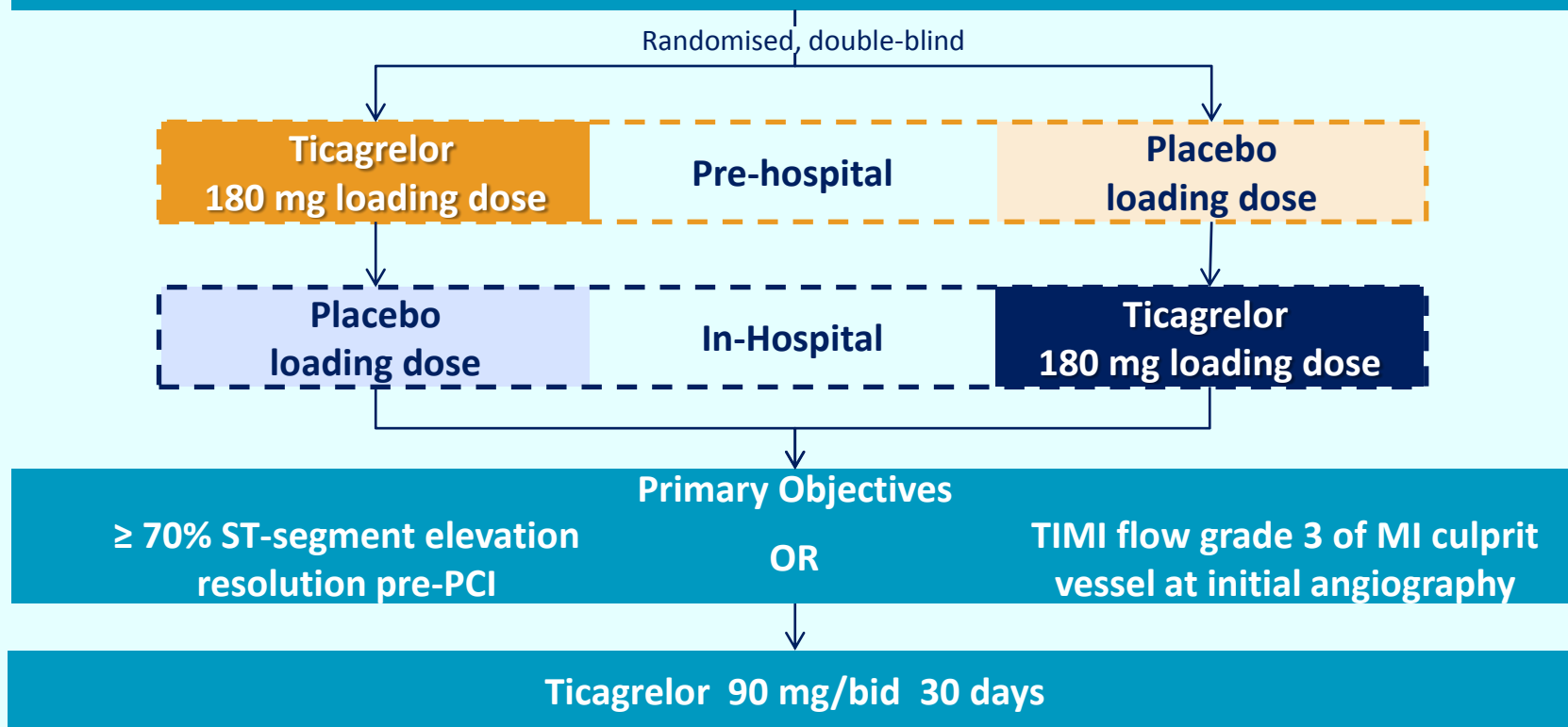


Atlantic
Population

Study population and design

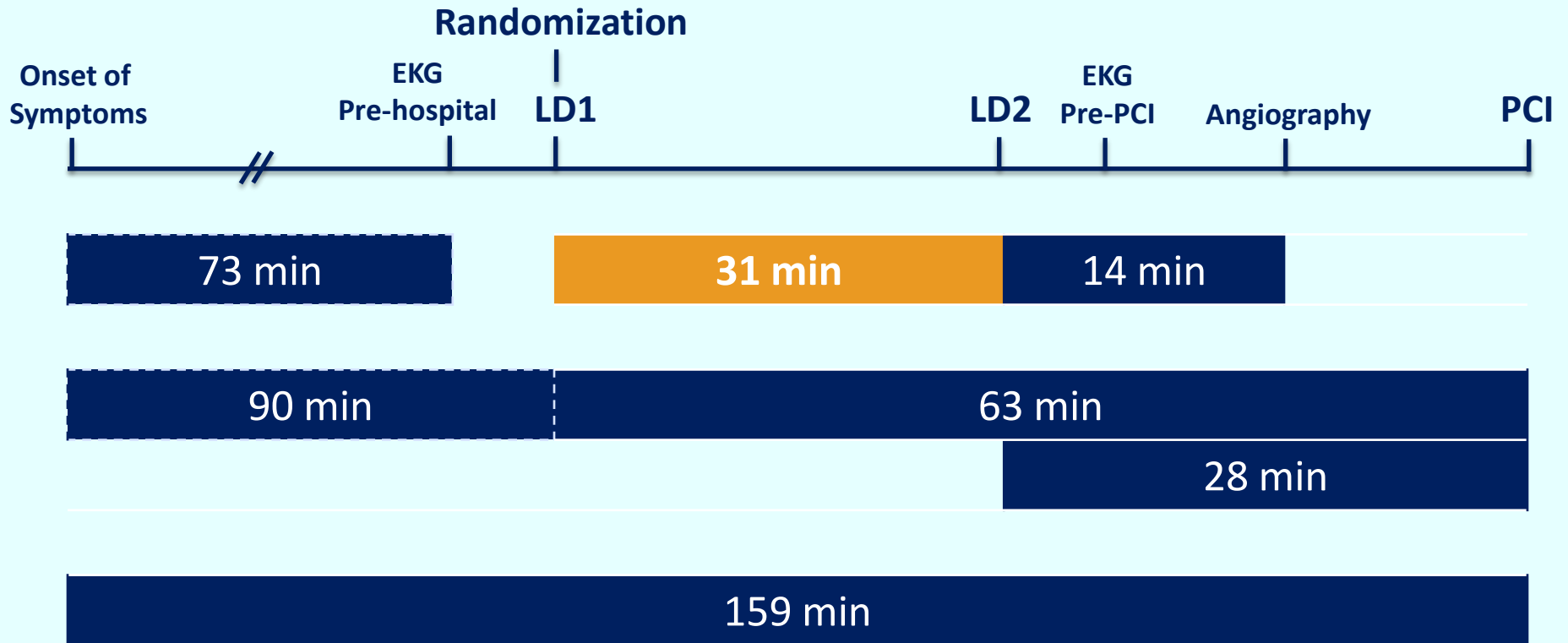
- Documented evidence of **STEMI**
- Planned for **angioplasty (PCI)**
- onset of ischaemic symptoms within 6 h
- initially managed by ambulance physician/personnel; also concerning patients not pre-treated for STEMI in emergency rooms of non-PCI hospitals

STE-ACS planned for PCI (N = 1870)



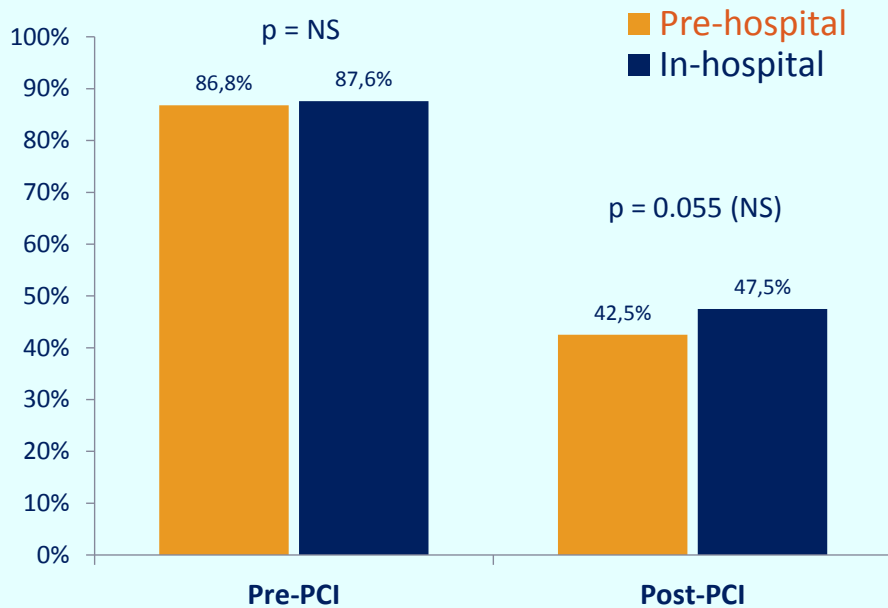


Median times to pre- and in-hospital steps

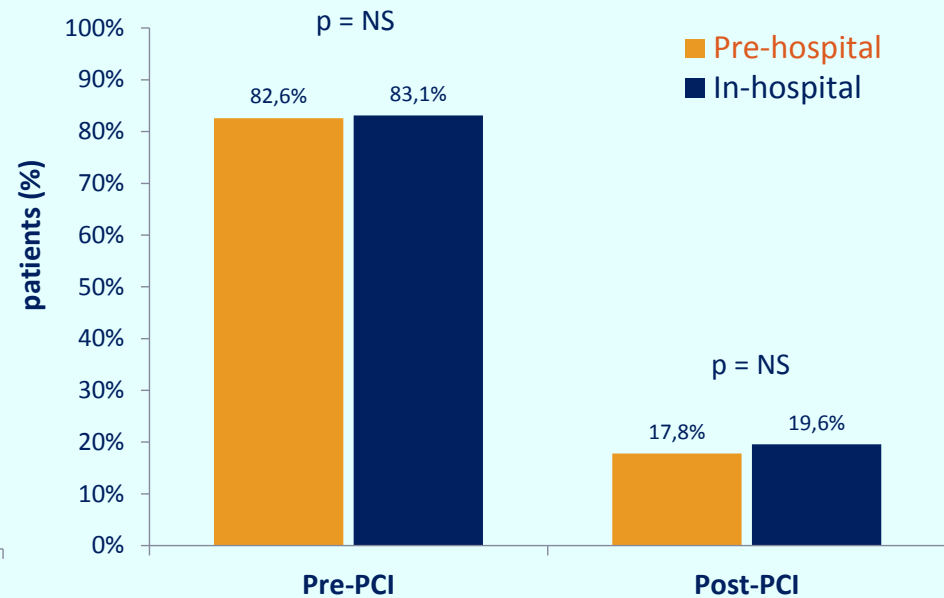




1st Co-primary endpoint No ST-segment resolution ($\geq 70\%$)

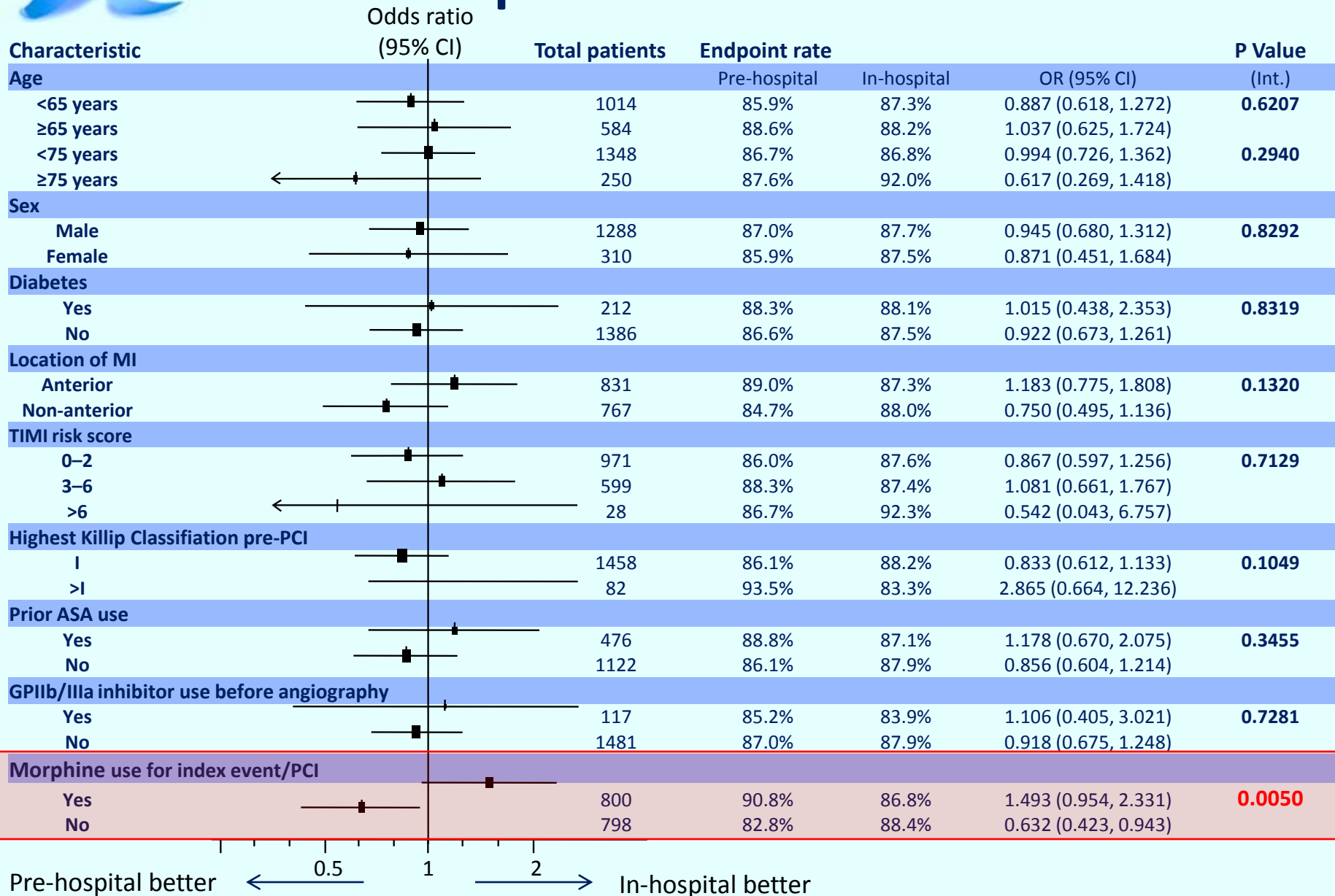


2nd Co-primary endpoint No TIMI 3 flow in infarct-related artery



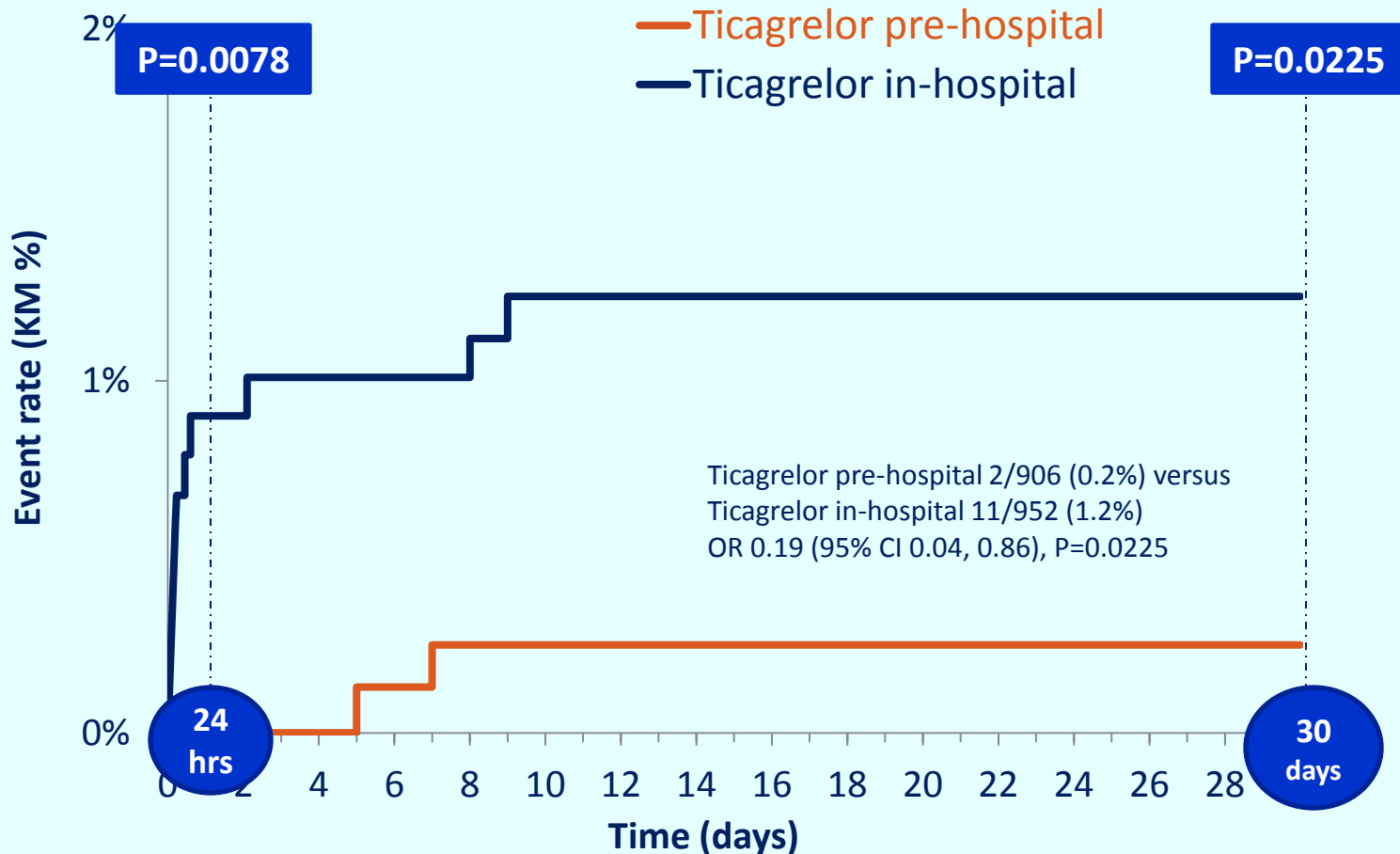


Absence of ST-segment resolution by patient characteristics





Definite stent thrombosis up to 30 days

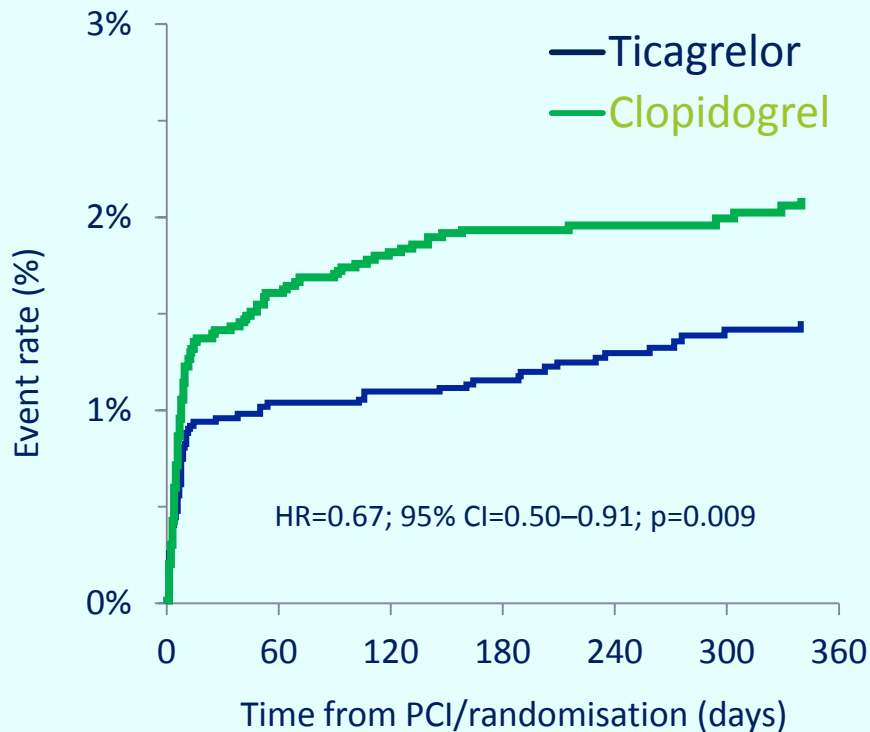




Ticagrelor and definite stent thrombosis

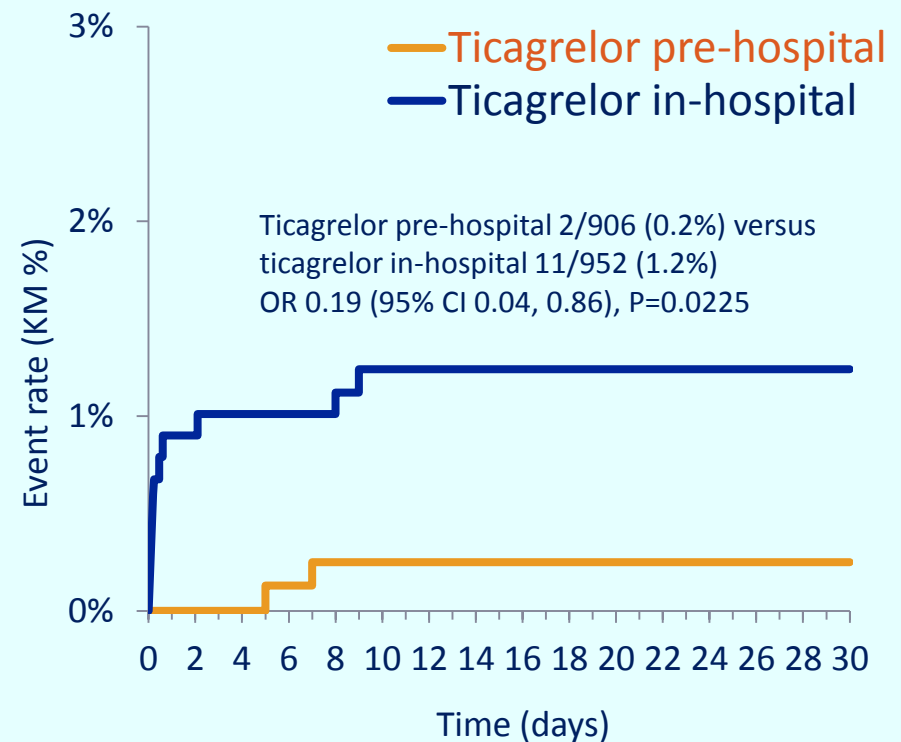
PLATO

In-hospital Ticagrelor vs. Clopidogrel



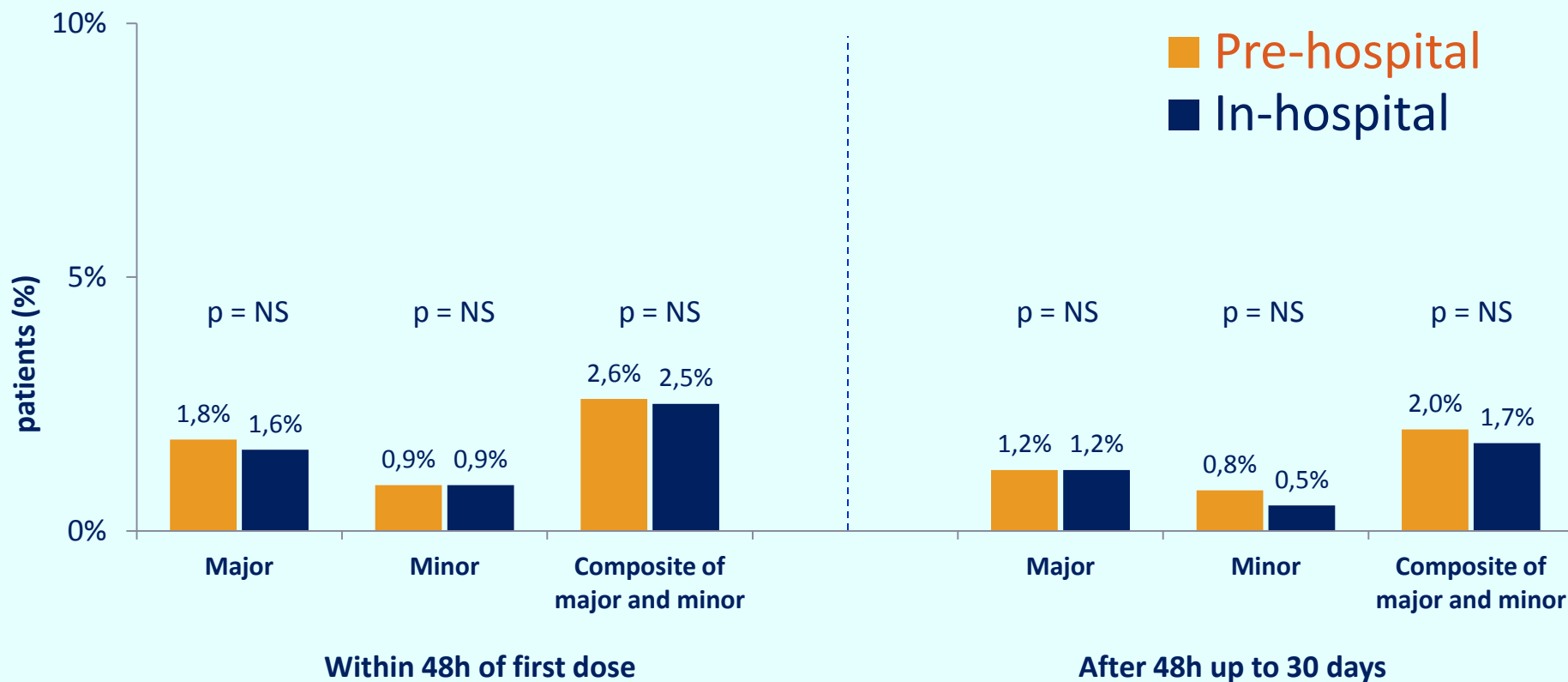
ATLANTIC

Pre-hospital Ticagrelor vs. In-hospital ticagrelor





Non-CABG-related bleeding events (PLATO definitions) - Safety population





Conclusion

Pre-hospital ticagrelor administration a short time before PCI in patients with ongoing STEMI is **safe** but **does not improve pre-PCI coronary reperfusion**. It may, however, **reduce the risk of post-PCI stent thrombosis**.